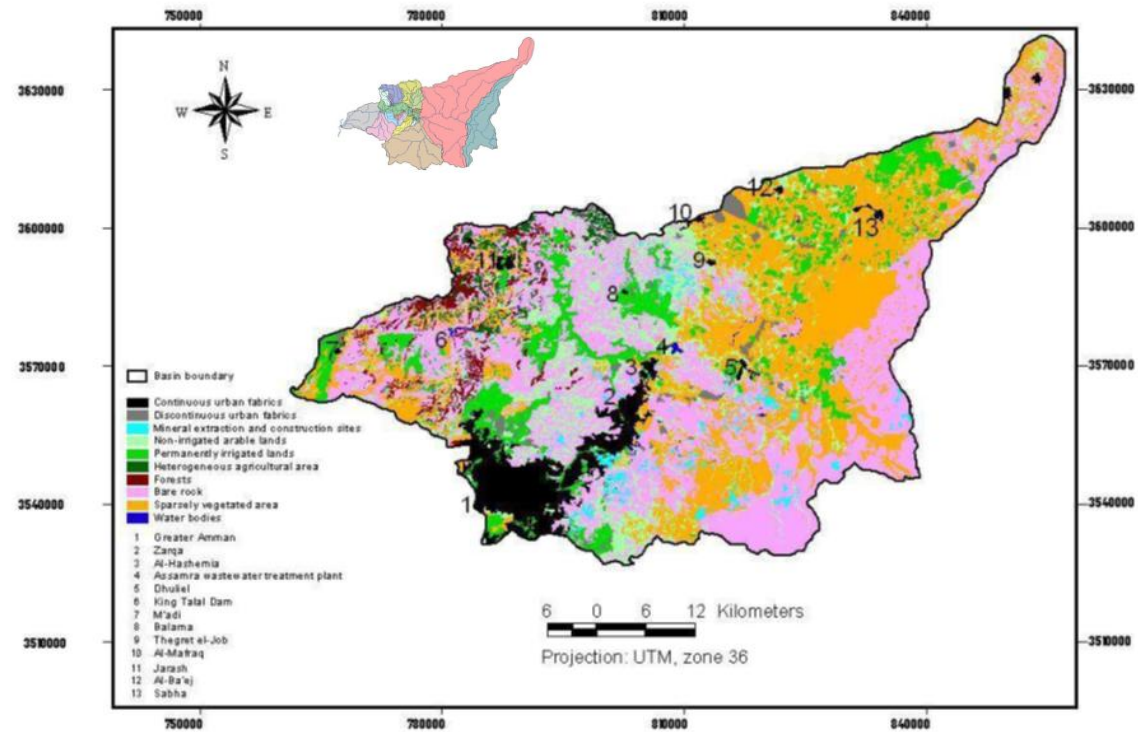


WATER MANAGEMENT IN GREATER AMMAN, JORDAN

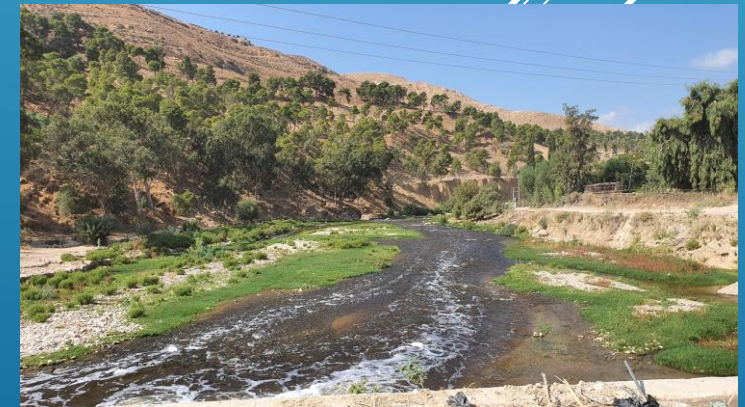
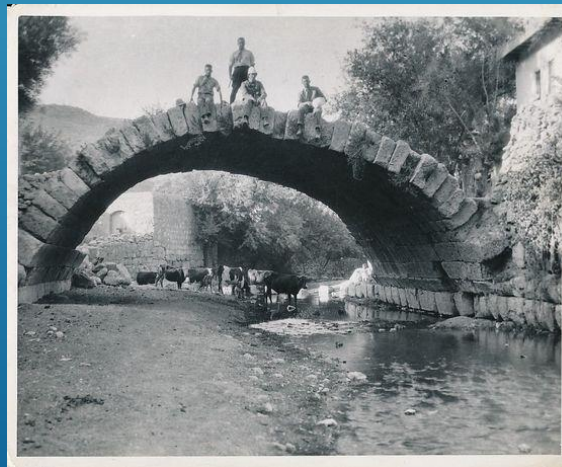
Case study: by Kamal Jalouqa
Urban planner, consultant in development studies

Presented at the Webinar on:
21st Century water and Sanitation in Cities
May 6 2021



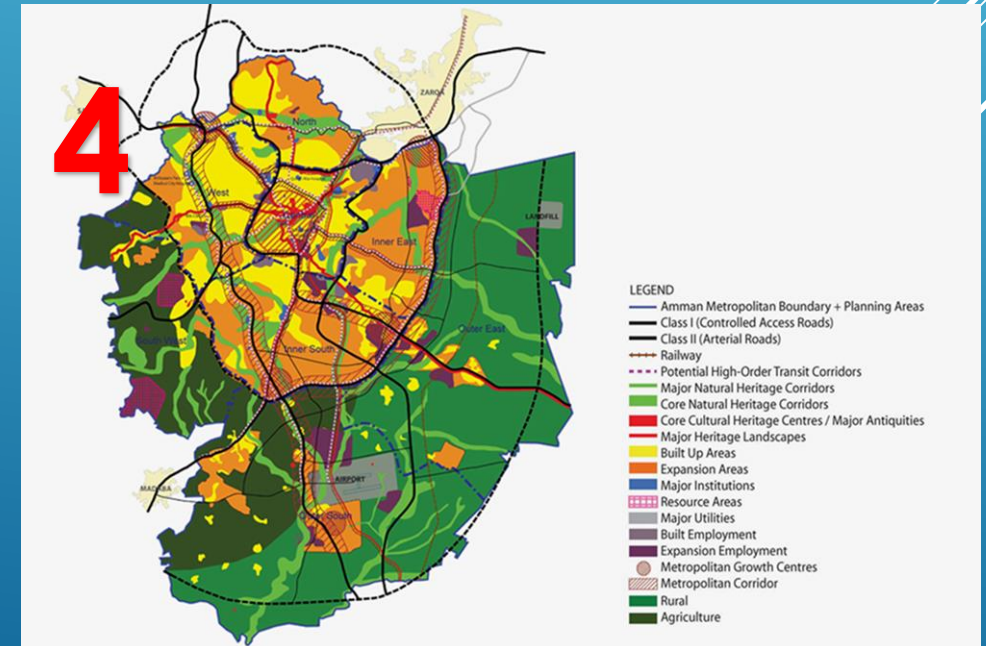
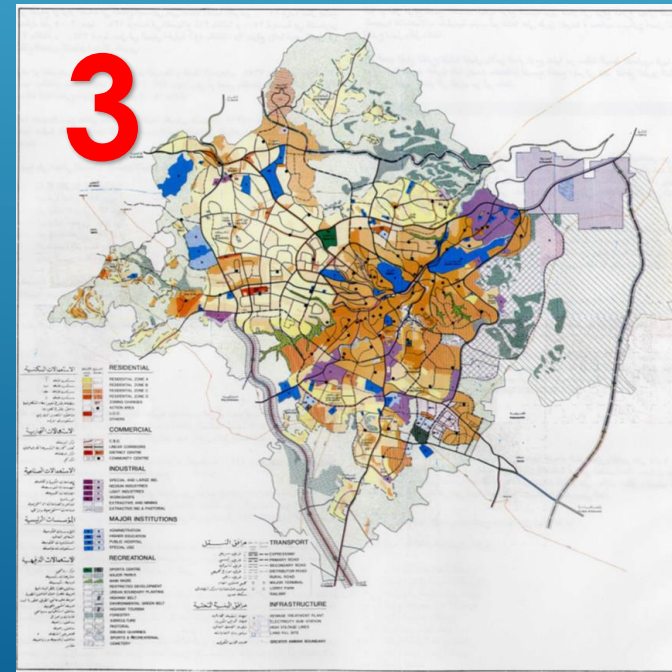
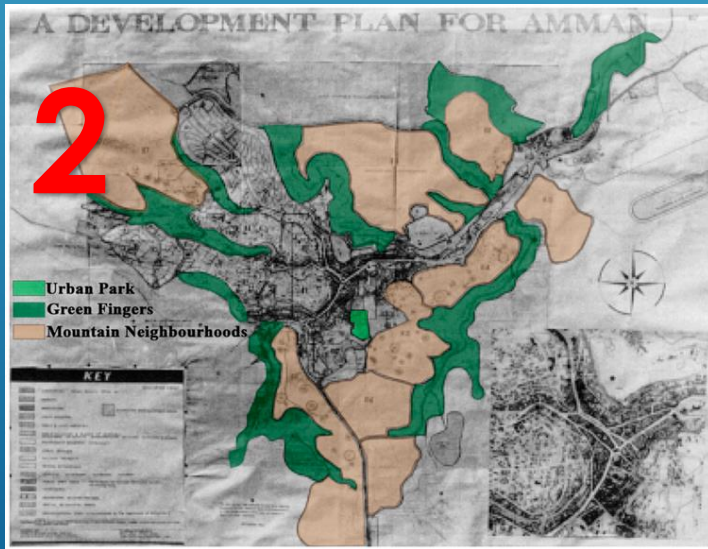
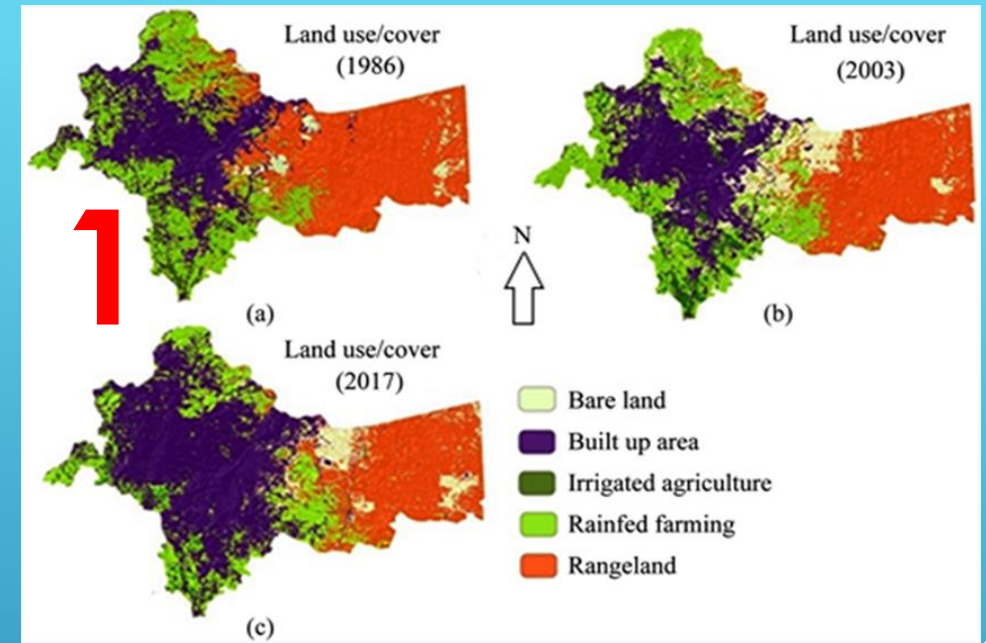


Zarqa river basin and sub-basins: Greater Amman and Zarqa are in the basin with a population of five million
Amman was named the city of Waters in Greek and Roman times. Not anymore!



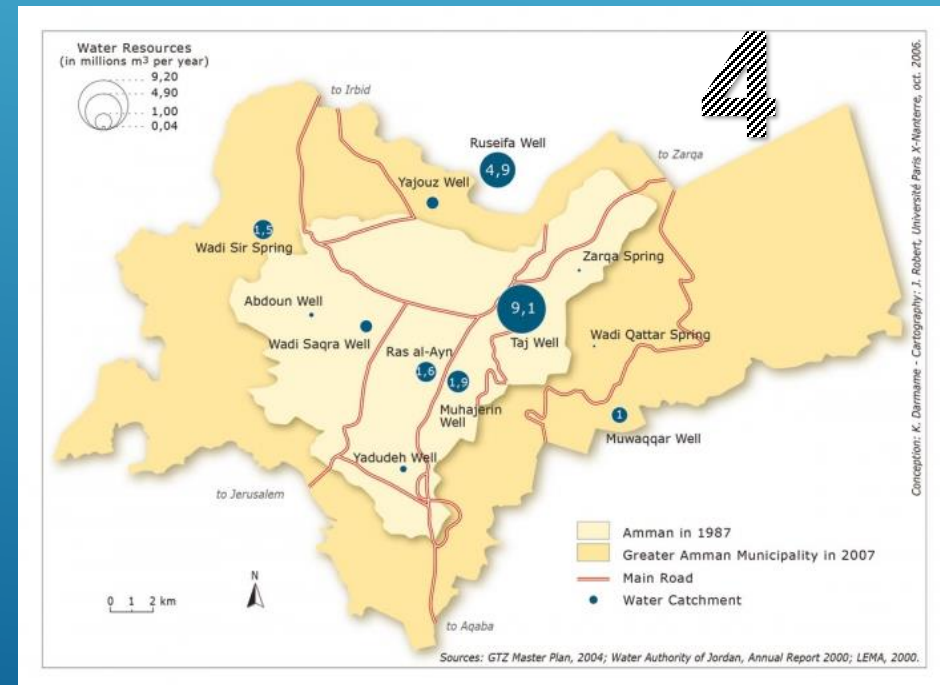
Urban development and planning:

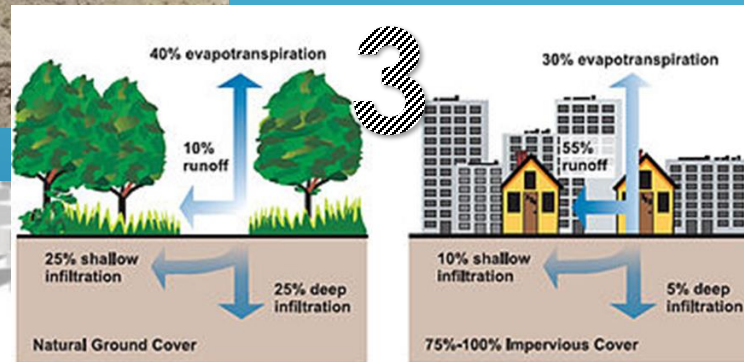
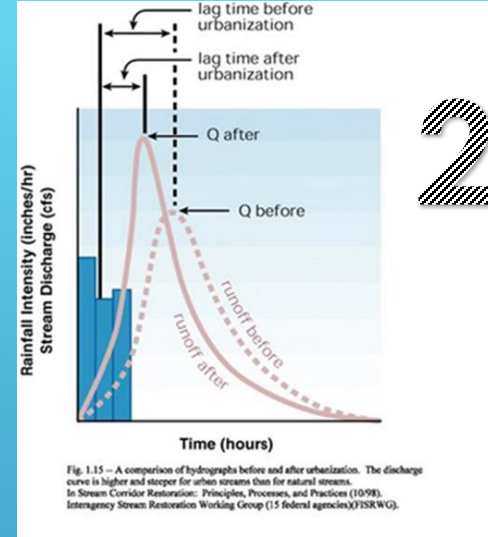
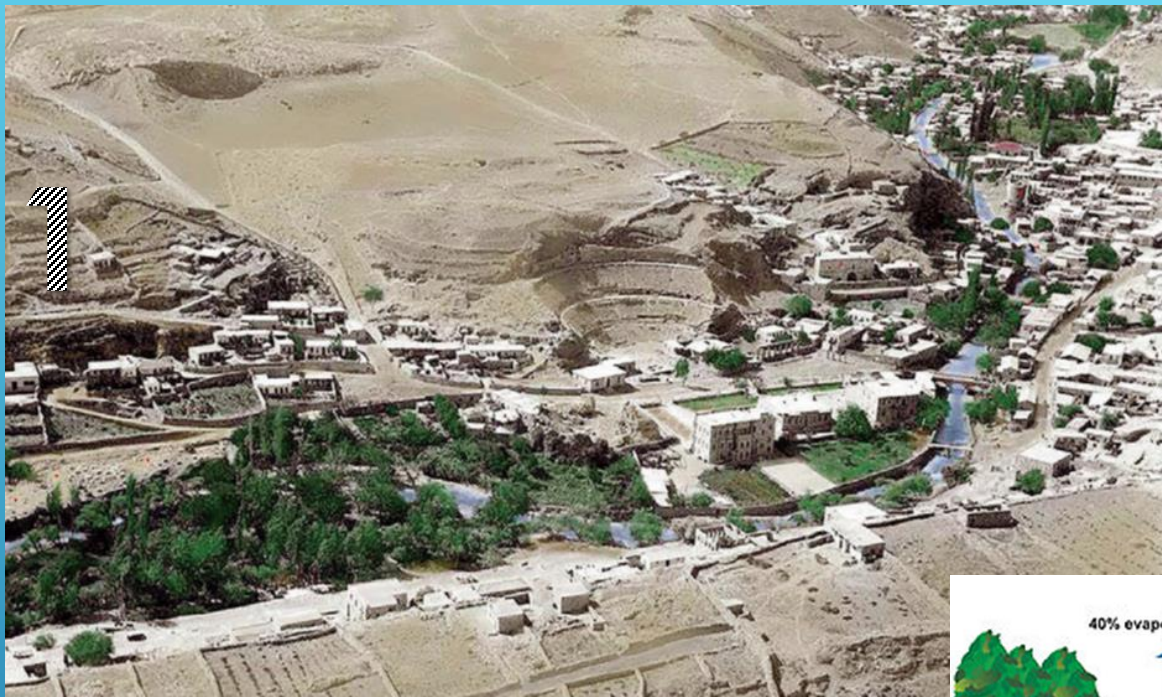
- 1- Urban development 1986, 2003, 2017
- 2- The plan of 1955 protected recharge areas
- 3- The plan of 1987, densification of Zoned areas for efficient land & infrastructure utilization
- 4- The Plan of 2010, utilise existing capacity & infrastructure



Water supply to the population:

- 1- Water is pumped on a weekly basis, 12-18 hours one a week.
- 2- 98 of the households are connected to water network, 92 to sewer network.
- 3- All households and building have tanks on the roof for a full week consumption, water saving is a publicly adopted policy.
- 4- Water is pumped to the city from local and remote sources: 50, 70, and even 320 Km away
- 5- Water supply utility: till mid 1970s Municipal, 1978 Regional water corporation, 1990 till present water utility consortium.
- 6- Water sources are at risk in quantity and quality, some sources already have RO plants





Re-install aquifer replenishing capacity:

- 1- Until 1980s water was mainly supplied from local sources such as springs and wells.
- 2,3- Converting land cover from natural soil to concrete diminishes aquifer recharge capacity,
- 4- Urban design solutions to regain recharge capacity

Large scale projects:

- 1- Protecting natural land cover through parks and green areas, city parks (revierparks) and local recharge pits as urban design solutions.
- 2- Hydrogological studies are integrated into urban plan revisions, urban design and architectural solutions.
- 3- Community support is vitally important in the process.

